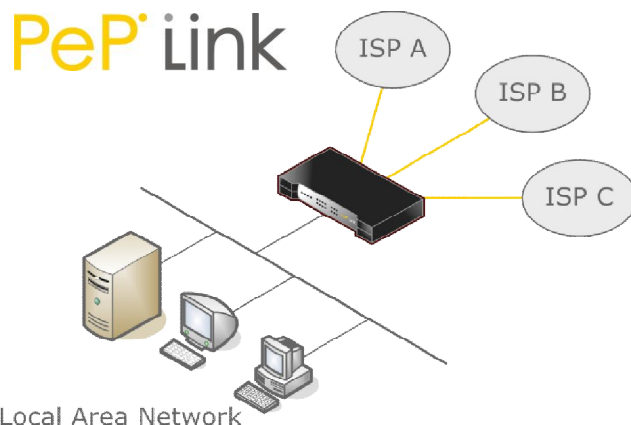


Brightclick Solutions Sdn Bhd would like to introduce Peplink Load Balancer to serve your corporate demand and needs on

- 1) Internet Bandwidth Increase
- 2) Internet Load Sharing
- 3) Internet Redundancy, Backup and Fail Over
- 4) Equipment and Internet High Availability
- 5) And Others



Peplink Internet Load Balancer Features:

- 1) Link Aggregation & Load Balance
- 2) Intelligent Failover
- 3) Inbound Load Balancing *
- 4) Drop In Mode – Fast deployment and minimized down time *
- 5) QoS for VoIP & E-commerce *
- 6) VoIP, SIP ALG and Vonage Support
- 7) Stateful Firewall
- 8) 7 Load Balance Algorithms (Weight Control) *
- 9) Session Persistence / Binding
- for consistent connection for e-commerce site
- 8) Dual Flash
- 9) Traffic Reporting
- 10) Authoritative DNS & Inbound Load Balance
- 11) User Group Bandwidth Control *
- 12) High Availability - Hardware 1+1 backup *
- 13) VPN Load Balance & Failover*
- 14) Site-to-Site VPN Bonding *
- 15) Built-in PPTP Server *
- 16) LAN ByPass *
- 17) 3G Modem Support *

* Depends on Model

Peplink Balance Family at a Glance

Peplink Balance 20/30
2 to 3 Internet / WAN Links
Small Office / Home Office (SOHO)

Peplink Balance 210/310
2 to 3 Internet / WAN Links
Small to Medium Enterprise

Peplink Balance 380/580
3 to 5 Internet / WAN Links
Medium to Large Enterprise

Peplink Balance 710/1350
7 to 13 Internet / WAN Links
Medium to Large Enterprise



Peplink Balance:

A complete solution suite that caters to a diverse range of business environments, from home offices up to large enterprises.

Please email or
call us to request
for a presentation

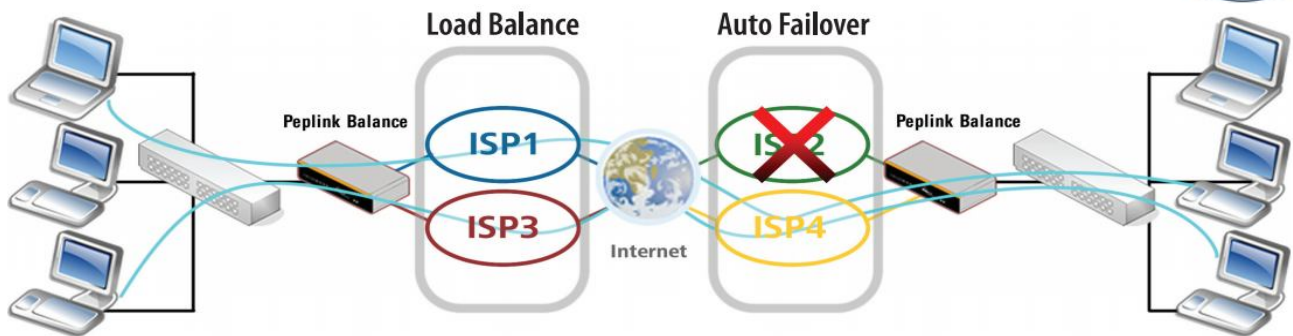
Feature Comparison

	20	30	210	310	MAX	380	580	710	1350
Designed For	Power User	Home Office	Small Business	Small Business	Mobile	Mid-Size Business		Large Enterprise	
Router Throughput	30M	30M	50M	50M	50M	170M	250M	350M	1500M
WAN Ports / Internet Links	2	3	2	3	6*	3	5 (GbE)	7 (3x GbE)	13 (GbE)
LAN Ports	4	4	4	4	4	1	1 (GbE)	1 (GbE)	1 (GbE)
Load Balancing / Failover	●	●	●	●	●	●	●	●	●
Drop-In Mode	○	○	●	●	○	●	●	●	●
Next Generation Broadband Ready	○	○	●	●	●	●	●	●	●
1U Rackmount	○	○	●	●	●	●	●	●	●
Site-to-Site VPN Bonding ¹	○	○	●	●	●	●	●	●	●
Number of S2S VPN Peers	○	○	2	2	1	20	50	300	800
Bonded VPN Throughput	○	○	30M	30M	30M	60M	80M	150M	350M
PPTP VPN Server	○	○	○	○	○	○	○	○	○
Bandwidth Usage Monitor	●	●	●	●	●	●	●	●	●
Inbound Load Balancing	○	○	●	●	○	●	●	●	●
QoS for VoIP and E-commerce	○	○	●	●	●	●	●	●	●
User / Group QoS	○	○	○	○	●	●	●	●	●
3G Modem Support	●	●	○	○	●	●	●	●	●
1+1 Backup (VRRP)	○	○	●	●	○	●	●	●	●
LAN Bypass	○	○	○	○	○	○	○	○	○
Recommended Users ²	1-25		25-150			100-500	300-1000	500-2000	1000-5000

* Pepwave MAX features 2 x USB, 1 x Ethernet, 1 x PC Card, 1 x ExpressCard, and 1 x Wi-Fi WAN interfaces. ¹ Peplink Site-to-Site VPN Bonding requires a Peplink device at each end. For the most updated specifications, please refer to our website: <http://www.peplink.com/balance/>

Benefits:

Internet / VPN Load Balancing & Failover



Faster Server Hosting with Inbound LB



- ✓ More Bandwidth
- ✓ Extreme Reliability
- ✓ Reduced Cost
- ✓ Group Bandwidth Control

